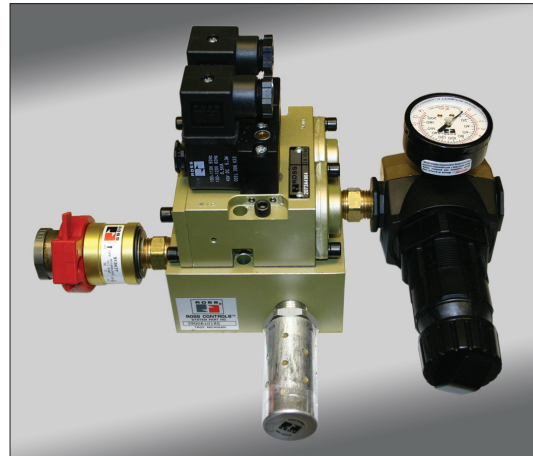
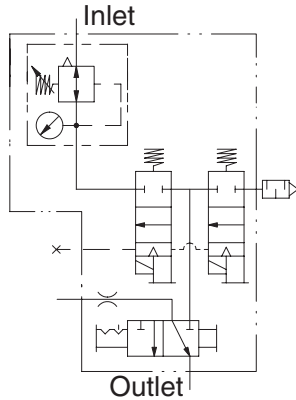


New Product Introduction

Automatic Counterbalance

Automatic Pressure Control Applications

Economy 3/4" Fill-dump



Dimensions - inches (mm)

Height	Width	Length	Weight lb (kg)
4.2 (107)	7.5 (191)	5.7 (145)	6.0 (2.8)

* For BSPP threads add "D" prefix to the model number, e.g., D3900A1018W.

3900A1018Z (110 volts AC)
3900A1018W (24 volts DC)

GENERAL:

Ross has added a new, more economical, automatic counterbalance assembly to its proven family of products. The 3900A1018 unit has been designed to provide basic pressure control (fill/dump) to accumulators feeding the counterbalance cylinders.

Automatic pressure adjustments are possible in combination with a transducer (mounted on the accumulator), the pressure controls and our fill/dump solenoids. A manual regulator attached to the inlet allows for manual pressure control, if required. A low profile lockout valve keeps the unit compact and provides a lockout/tagout point for system maintenance. Automatic counterbalance adjustments during die changes improve part quality and reduce wear.

FEATURES:

- Interfaces with controls to monitor/maintain correct counterbalance pressure
- 3/4" units furnished with DIN electrical connections
- 1" & 1 1/4" units furnished with Brad Harrison connectors



ROSS CONTROLS®
 U.S.A.
 Customer Svs. 1-800-GET-ROSS
 Technical Svs. 1-888-TEK-ROSS
www.rosscontrols.com

WARRANTY and CAUTIONS

Standard ROSS warranty and cautions apply, available upon request or at www.rosscontrols.com

ROSS EUROPA GmbH Germany Fax: 49-6103-74694 info@rosseuropa.com	ROSS ASIA® K.K. Japan Fax: 81-427-78-7256 custsvc@rossasia.com.jp	ROSS UK Ltd. United Kingdom Fax: 44-121-559-5309 sales@rossuk.co.uk	ROSS CONTROLS® INDIA Pvt. Ltd. India Fax: 91-44-2625-8730 rossindia@airtelbroadband.in	ROSS SOUTH AMERICA Ltda. Brazil Fax: 55-11-4335-3888 vendas@ross-sulamerica.com.br	DIMAFLUID s.a.s. France Fax: 33-01-4945-6530 dimafluid@dimafluid.com	ROSS CONTROLS(CHINA) Ltd. China Fax: 86-21-6915-7960 alvinzhurong@vip.163.com
--	--	---	--	---	---	---