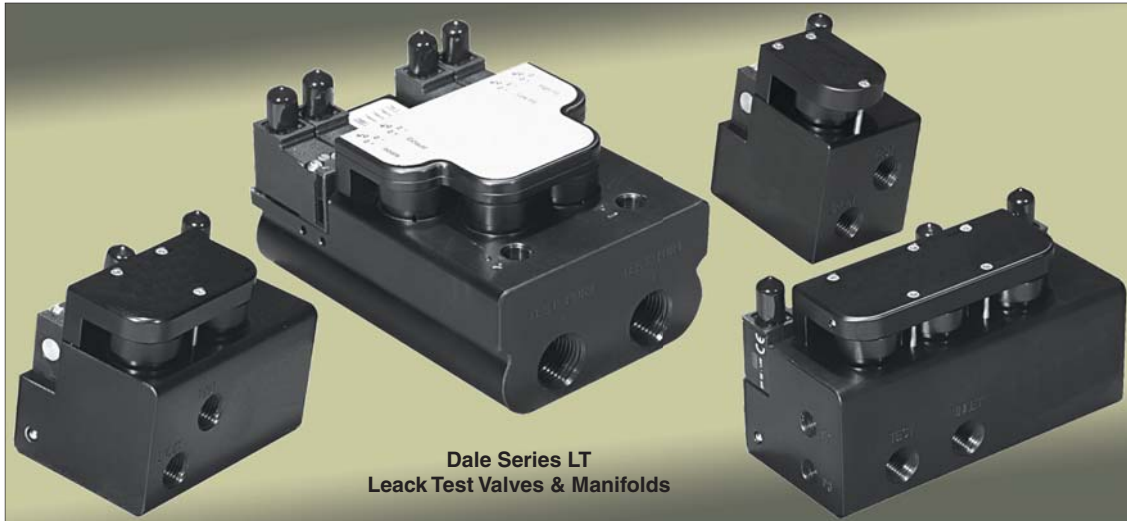


New Product Information

Dale Series LT Leak Test Valves & Manifolds

2/2, 3/3, 3/4, 4/4, 5/4
Normally Closed
1/4" and 1/2" Ported



STANDARD SPECIFICATIONS:

Pilot Solenoid: DC power.
Rated for continuous duty.

Standard Voltages: 120 volts AC, 50/60 Hz;
24 volts DC.

Power Consumption:
Per Solenoid: 3 VA on AC; 2.5 watts on DC.

Ambient/Media Temperature:
40° to 120°F (4° to 50°C).

Flow Media: Filtered air; 5 micron
recommended.

Sensor Port: 1/8 NPT sensor ports.

Pilot Pressure: 50 to 145 psi (3.4 to 10 bar).
Must be equal to or greater than inlet pressure.

Inlet Pressure: 2 to 145 psi (0.13 to 10 bar).

Port Threads: NPT standard, BSPP.

GENERAL:

Bubble Tight – Patented poppet design provides exceptional sealing capabilities.

High Flow – Internal 1/2" orifice with flow range from 2.2 to 5.0 C_v.

Sensor Ports – Integrated flow and pressure sensor ports eliminates the need for extra fittings.

Temperature Effects – Reduce heating effects with solenoids drawing less than 2 watts each.

Eliminate Tubing – The manifold design reduces leak paths by eliminating valve connections.

Flexibility – Independent internal poppets improve application adaptability.

FEATURES:

- Cost effective
- Compact design
- Robust construction
- Continuous duty rated
- Non-Lube service
- High flow
- Leak tight
- Ease of maintenance and repair

APPLICATIONS:

- Directional control
- Pressure isolation
- Pressure decay test
- Bypass fill valve
- Isolation valve
- Flow test
- Differential pressure test
- Two channel pressure decay test

Note: For fluid applications, consult ROSS.

LT Series Solenoid Pilot Valves & Manifolds

2/2 Valves

2-port 2-position, normally closed (NC) valve.

Operator: External pilot, Solenoid actuated.

Applications: Directional control, Pressure isolation.

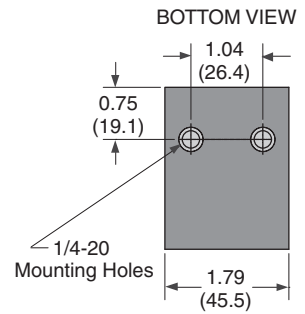
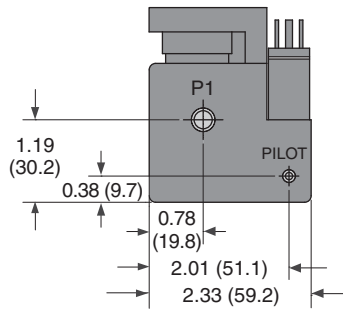
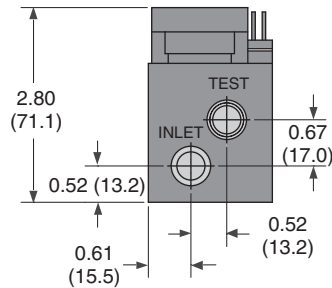
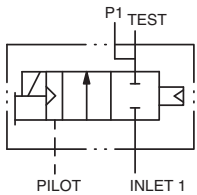
The LT 2/2 valve completes the product line with a leak tight high flow 2-way valve that is suitable for any application.

| Port Size | Valve Model Number* | Avg. C_v | Dimensions inches (mm) | | | Weight lb (kg) |
|-----------|---------------------|------------|------------------------|-------------|-------------|----------------|
| | | | 1 | 2 | NC | |
| 1/4 | 1/4 LT12NA27500Z | 2.2 | 2.33 (59.2) | 1.79 (45.5) | 2.80 (71.1) | 1.0 (0.5) |

*120 volts AC, 50/60 HZ; for 24 volts DC, replace suffix "Z" with "W", e.g. LT12NA27500Z.

NPT port threads, for BSPP threads, replace "N" in the model number with a "D", e.g. LT12DA27500Z.

2/2 Valve Dimensions – inches (mm)



3/3 Manifolds

Manifold Valve 3-port 3-position, normally closed.

Operator: External pilot, Solenoid actuated.

Applications: Pressure Decay, Bypass Fill and Pressure isolation.

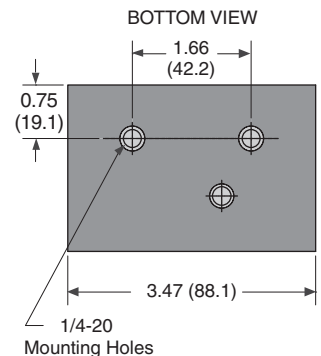
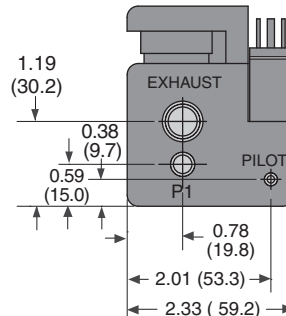
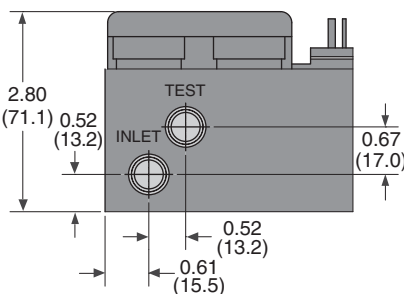
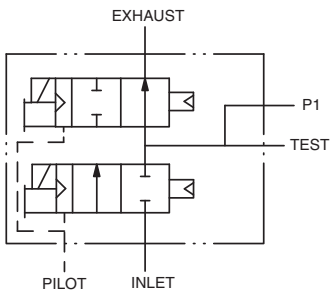
The LT 3/3 manifold is a dual solenoid 3-way valve that allows independent actuation of the inlet and exhaust functions. This special feature allows the user to pressurize a volume, close the inlet, and maintain pressure until exhausting is desired.

| Port Size | Model Number* | Avg. C_v | Dimensions inches (mm) | | | Weight lb (kg) |
|-----------|------------------|------------|------------------------|-------------|-------------|----------------|
| | | | 1 | 2 | NC | |
| 1/4 | 1/4 LT22NA27500Z | 2.2 | 3.47 (88.1) | 2.33 (59.2) | 2.80 (71.1) | 1.9 (0.9) |

*120 volts AC, 50/60 HZ; for 24 volts DC replace, suffix "Z" with "W", e.g. LT22NA27500Z.

NPT port threads, for BSPP threads, replace "N" in the model number with a "D", e.g. LT22DA27500Z.

3/3 Manifold Dimensions – inches (mm)



LT Series Solenoid Pilot Valves & Manifolds

3/4 Manifolds

Manifold Valve 3-port 4-position, normally closed (NC).

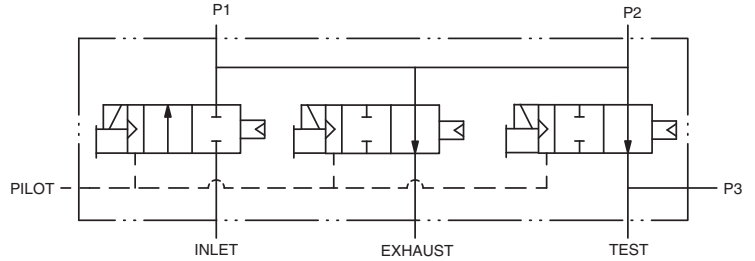
Operator: External pilot, Multi Solenoid actuated.

Applications: Single inlet for Decay, Flow, and Differential tests.

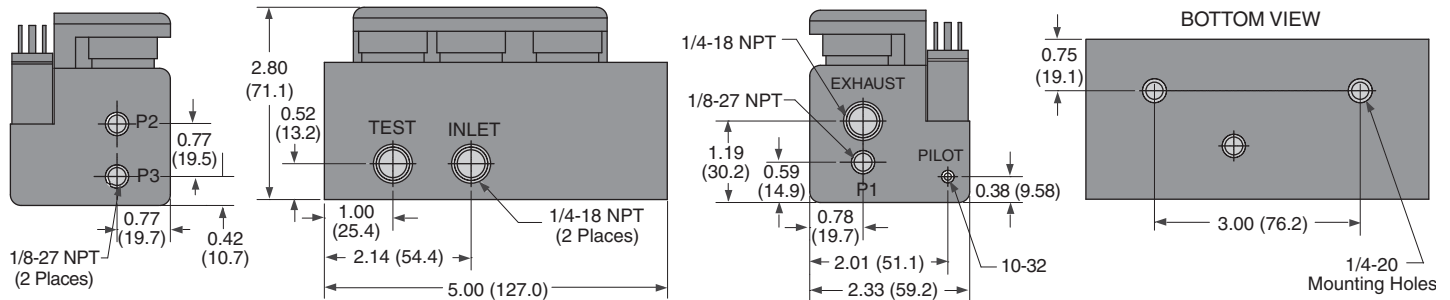
The LT 3/4 manifold has excellent flow, is compact and adaptable. This product can be field configured for flow, pressure decay, or differential pressure testing by selecting different combinations of the three sensor ports.

| Pipe Size | | Model Number* | Avg. C _v | Dimensions inches (mm) | | | Weight |
|-----------|-----|---------------|---------------------|------------------------|-------------|-------------|-----------|
| 1 | 2 | NC | | Length | Width | Height | lb (kg) |
| 1/4 | 1/4 | LT32NA27500Z | 2.2 | 5.00 (127.0) | 2.33 (59.2) | 2.80 (71.1) | 2.9 (1.3) |

*120 volts AC, 50/60 HZ; for 24 volts DC, replace suffix "Z" with "W", e.g. LT32NA27500W.
NPT port threads, for BSPP threads, replace "N" in the model number with a "D", e.g. LT32DA27500W.



3/4 Manifold Dimensions – inches (mm)



4/4 Manifolds

Manifold Valve 4-port 4-position, normally closed (NC).

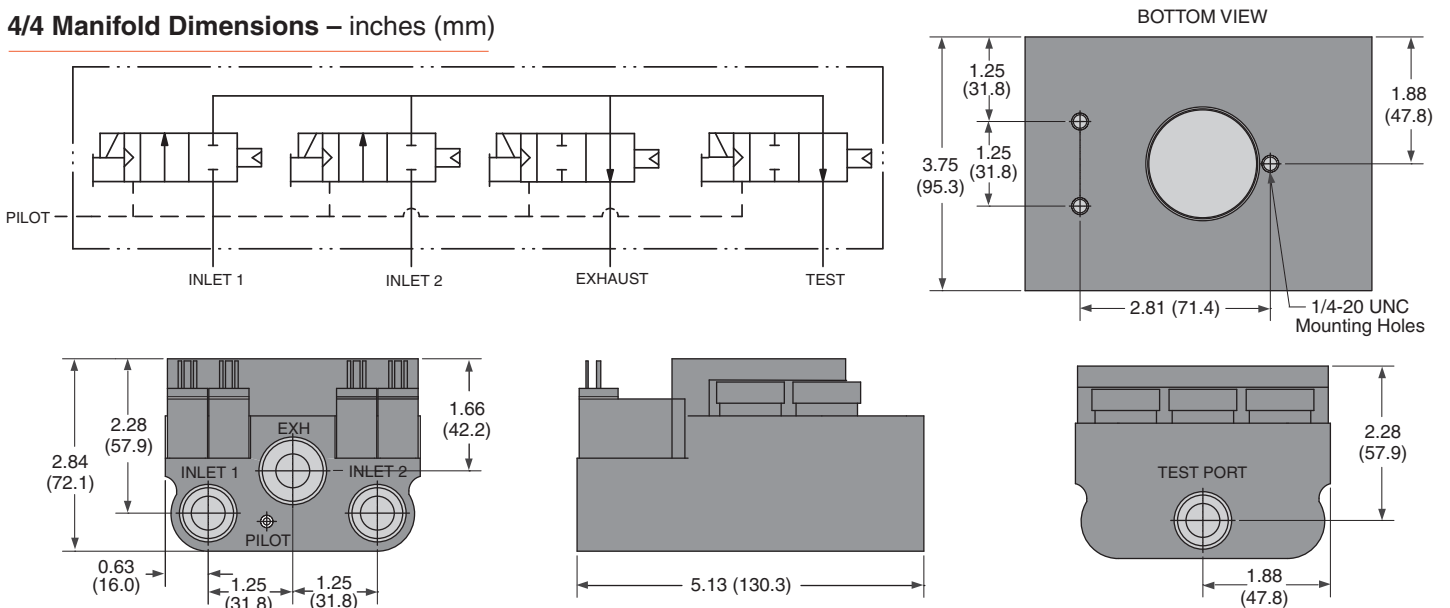
Operator: External pilot, Multi Solenoid actuated.

Applications: Flow and Pressure Decay.

| Pipe Size | | Model Number* | Avg. C _v | Dimensions inches (mm) | | | Weight |
|-----------|-----|---------------|---------------------|------------------------|-------------|-------------|-----------|
| 1 | 2 | NC | | Length | Width | Height | lb (kg) |
| 1/2 | 1/2 | LT44NA47500Z | 5.0 | 5.13 (130.3) | 3.75 (95.3) | 2.84 (72.1) | 3.2 (1.5) |

*120 volts AC, 50/60 HZ; for 24 volts DC replace suffix "Z" with "W", e.g. LT44NA47500W.
NPT port threads, for BSPP threads, replace "N" in the model number with a "D", e.g. LT44DA47500W.

4/4 Manifold Dimensions – inches (mm)



LT Series Solenoid Pilot Valves & Manifolds

5/4 Manifolds

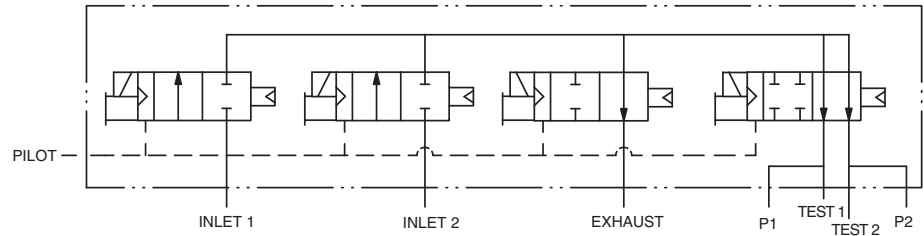
Manifold Valve 5-port 4-position, normally closed (NC).

Operator: External piloted, Multi Solenoid actuated.

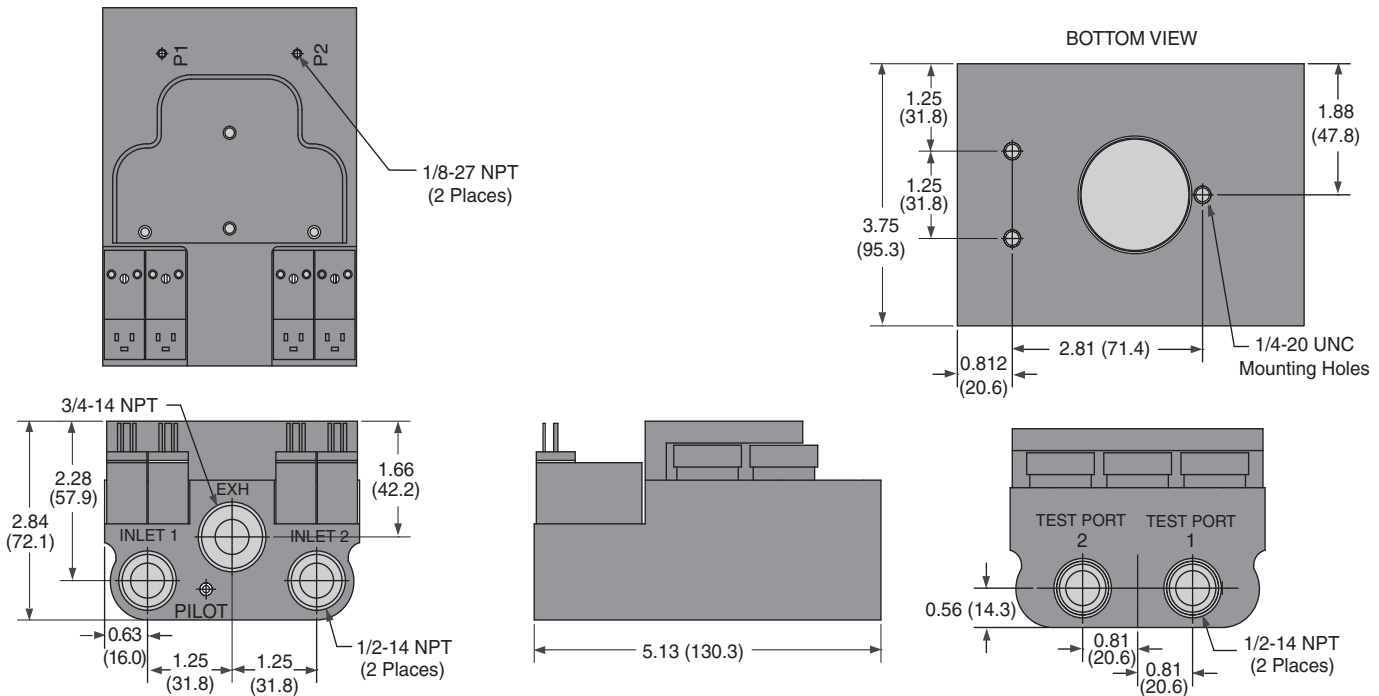
Applications: Two channel Pressure Decay, Differential Pressure.

| Pipe Size | Model Number* NC | Avg. C _v | Dimensions inches (mm) | | | Weight lb (kg) | |
|-----------|---------------------|------------------------|------------------------|--------------|-------------|-------------------|-----------|
| | | | Length | Width | Height | | |
| 1/2 | 1/2 | LT54NA47500Z | 5.0 | 5.13 (130.3) | 3.75 (95.3) | 2.84 (72.1) | 3.2 (1.5) |

*120 volts AC, 50/60 HZ; for 24 volts DC, replace suffix "Z" with "W", e.g. LT54NA47500W.
NPT port threads; for BSPP threads, replace "N" in the model number with a "D", e.g. LT54DA27500Z.



5/4 Manifold Dimensions – inches (mm)



The LT 4/4 and 5/4 manifolds are "all in one" directional control valves designed to fill, isolate, and test pressure containing vessels. All manifolds contain integrated sensor ports for flow, pressure decay or differential pressure testing. With dual inlet ports, and independent actuation of four internal poppets these manifolds also provide a flexible, high flow, compact air distribution solution for many other applications.



ROSS CONTROLS®
U.S.A.
Customer Svs. 1-800-GET-ROSS
Technical Svs. 1-888-TEK-ROSS
www.rosscontrols.com

WARRANTY and CAUTIONS

Standard ROSS warranty and cautions apply, available upon request or at www.rosscontrols.com.

ROSS EUROPA GmbH
Germany
Fax: 49-6103-74694
info@rosseuropa.com

ROSS ASIA® K.K.
Japan
Fax: 81-427-78-7256
custsvc@rossasia.co.jp

ROSS UK Ltd.
United Kingdom
Fax: 44-121-559-5309
sales@rossuk.co.uk

ROSS CONTROLS® INDIA Pvt. Ltd.
India
Fax: 91-44-2625-8730
rossindia@airtelbroadband.in

ROSS SOUTH AMERICA Ltda.
Brazil
Fax: 55-11-4335-3888
vendas@ross-sulamerica.com.br

DIMAFLUID s.a.s.
France
Fax: 33-01-4945-6530
dimafluid@dimafluid.com

ROSS CONTROLS (CHINA) Ltd.
China
Fax: 86-21-6915-7960
alvinzhurong@vip.163.com