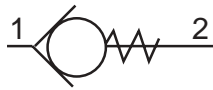
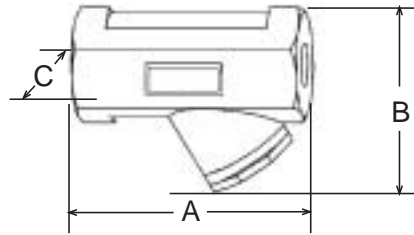




# NEW PRODUCT INFORMATION



## NEW LARGE CHECK VALVES



Ross check valves are self-actuating and designed to provide free air flow in one direction, and to be closed to flow in the opposite direction.

### Check Valve Features:

- A proven, rugged poppet design
- High flow
- Self-cleaning design
- Low cracking pressure
- Serviceable in-line
- Quiet operation due to soft-seal design.

### Applications:

- Surge tank inlets
- Large bore cylinders
- Air entry systems
- Accumulator inlet
- Backflow prevention
- Counterbalance applications

Port Size	Valve Model Number*	C <sub>v</sub> (Fully open)	Dimensions inches (mm)			Weight lb. (kg)
			A	B	C	
1/2	1968A4107	5.2				
3/4	1968A5107	8.6	4.8	3.2	1.8	.9 (.4)
1	1968A6117	8.3	(122)	(81)	(46)	
1	1968A6107	17				
1-1/4	1968A7107	22	5.4	4.3	2.3	2.0 (.9)
1-1/2	1968A8117	22	(137)	(109)	(58)	
1-1/2	1968A8107	50				
2	1968A9107	50	7.5	5.7	3.5	4.7 (2.1)
2-1/2	1968A9117	50	(191)	(145)	(89)	

\* Metric and SAE ported models also available. To order, precede model number with a "D" (metric) or an "S" (SAE).

### SPECIFICATIONS:

**Ambient/Media Temperature:** 40° to 175°F (4° to 80°C).

**Flow Media:** Filtered air; 5 micron recommended.

**Pressure Range:** 5 to 150 psig (0.3 to 10 bar).

**Cracking Pressure:** Less than 1.5 psi.

ROSS CONTROLS® • P.O. Box 7015 • Troy, MI 48007-7015  
Phone: (800) GET-ROSS • Fax: (706) 356-3700  
[www.rosscontrols.com](http://www.rosscontrols.com)