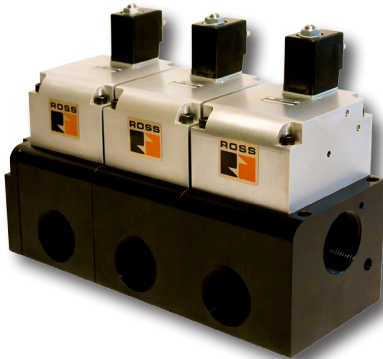
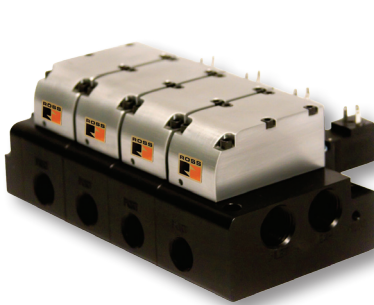


Dale Series

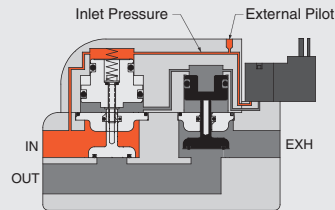
CP, CX, LF, LX & LT

Manifold Compact Poppet Valves Inline Poppet Valves Leak Tight Valves & Manifolds For the Packaging Industry

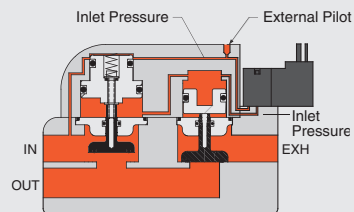


3/2 Normally Closed

1 - Valve Not Actuated

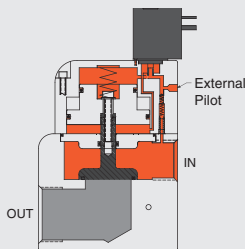


2 - Valve Actuated

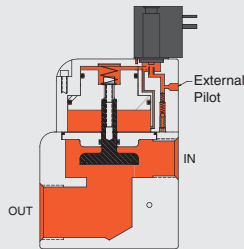


2/2 Normally Closed

1 - Valve Not Actuated



2 - Valve Actuated



Consider it **DONE!**

CP Manifold Series

Function: 2/2
Port Size: 3/8" to 2 1/2"

Process Industry

- Liquid Mixing applications
- Vacuum Fill applications
- Process Routing

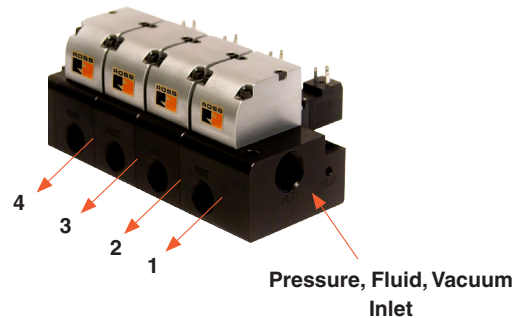
Vacuum Industry

- Multi-million Life Cycles
- Leak Tight (1×10^{-6} std. cc/sec.)
- Medium to Ultrahigh Vacuum

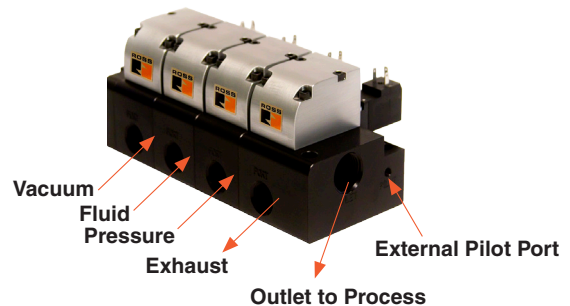
General Automation

- Improved Shift Speed
- Compact Cost Effective
- Ease of Repair

Channel Selection



Process Solution



LF Inline Series

Function: 2/2
Port Size: 3/8" to 2 1/2"

Process Industry

- Bi-directional Flow
- Adjustable Shift Speed Control
- Solenoid Actuated

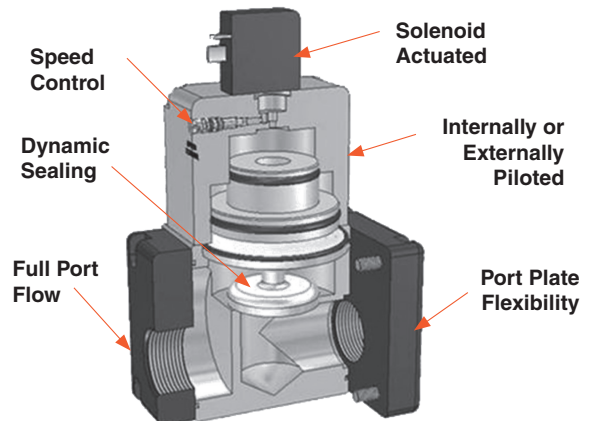
Vacuum Industry

- Multi-million Life Cycles
- Leak Tight
- Medium to Ultrahigh Vacuum

General Automation

- Improved Shift Speed
- Compact Cost Effective
- Ease of Repair

Target Market: Diaphragm & Ball Valve



ROSS In Processing & Packaging

Applications:

One of the most exciting aspects of the Dale series is the diversity of markets in which we are succeeding. The unique capabilities of the Dale series is providing new solutions for many industries that have had to make do with products on the market today.

Packaging & Processing:

The Dale series compact manifold and inline valve provides a perfect solution in the packaging industry. Many times the customer is working with vacuum, pressure and gas injection. The Dale manifold increases production rates, reduces the mounting area and eliminates piping.

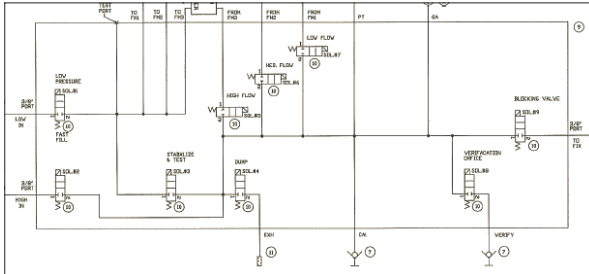


Benefits:

- Compact and high flow with up to a Cv of 100 to reduce cycle time.
- Light weight CP manifold series eliminates piping and allows the valves to be mounted closer to the process.
- Elimination of vacuum loss during actuation of typical 3-way valves by advanced control with a 2-station, 2-way manifold design.
- The Bi-directional flow capabilities allow vacuum, pressure or gas on any port at any time.

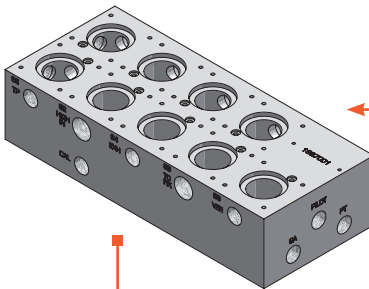
ROSS/FLEX® Expands with New Dale Series

Utilizing the revolutionary new Dale cartridge style poppet valve the ROSS/FLEX® engineering team has greatly expanded their capabilities and deliveries for the most demanding applications. A cost effective manifold solution can greatly reduce assemble time, space required and trouble shooting in the field.



From Concept

To Design



To Rapid Delivery

